

# Smart Pak® Technical Specifications

AbTech's Smart Pak® is designed to for use in new or existing vaults that experience oil and grease pollution accompanied by sediment, debris, and bacteria. Smart Pak® helps meet and/or exceed stormwater NPDES permit requirements with effective filtration, absorption, life expectancy and maintenance costs. Smart Pak® products are constructed out of AbTech's patented Smart Sponge media which is a non hazardous, material, and can be specified for a new variety of applications.

## Key Features

- Multiple contaminant treatment: trash/debris, sediment, hydrocarbons, bacteria (when specified with Smart Sponge® Plus).
- Applicable for in-line and off-line stormwater system applications
- Variable treatment capacity
- Multiple Designs: - single chamber; direct flow or - multiple chamber; deflected flow
- Capable of removing up to 3 times its own weight in hydrocarbons
- Does not leach or leak by fully encapsulating recovered oil
- Inhibits growth of mildew and mold
- Does not absorb water and is unaffected by salinity
- Used Smart Pak can be recycled as an energy source (BTU value of 10,000)



## Product Specification

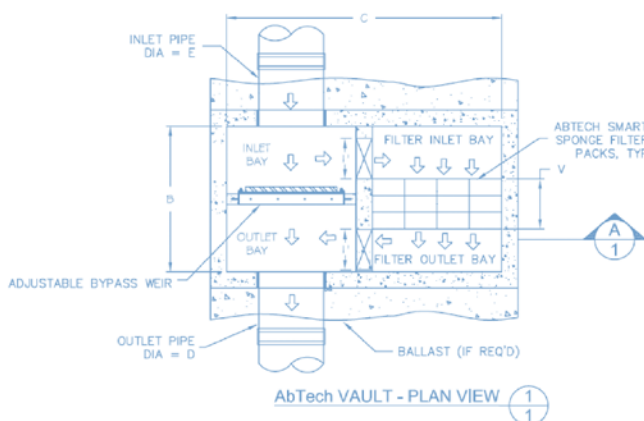
Smart Pak® Product Code	Description	Dimensions	Gross weight
SMPK-3	Smart Sponge Filtration Module individually contained in porous fabric	15" x 15" x 3"	8 lbs. +/- 0.25
SMPK-3-Plus4	Smart Sponge Plus Filtration Module individually contained in porous fabric	15" x 15" x 3"	8 lbs. +/- 0.25
SMPK-6	Smart Sponge Filtration Module individually contained in porous fabric	12" x 12" x 3"	5.2 lbs.+/- 0.2
SMPK-6-Plus4	Smart Sponge Plus Filtration Module individually contained in porous fabric	12" x 12" x 3"	5.2 lbs.+/- 0.2
SMPK-7	Smart Sponge Filtration Module individually contained in porous fabric	15" x 12" x 3"	6.4 lbs+/- 0.2
SMPK-7-Plus4	Smart Sponge Plus Filtration Module individually contained in porous fabric	15" x 12" x 3"	6.4 lbs+/- 0.2
SMPK-8	Smart Sponge Filtration Module individually contained in porous fabric	12" x 12" x 2"	3.5 lbs. +/- 0.1
SMPK-8-Plus4	Smart Sponge Plus Filtration Module individually contained in porous fabric	12" x 12" x 2"	3.5 lbs. +/- 0.1
SMPK-9	Smart Sponge Filtration Module individually contained in porous fabric	15" x 15" x 2"	5.5 lbs. +/- 0.2
SMPK-9-Plus4	Smart Sponge Plus Filtration Module individually contained in porous fabric	15" x 15" x 2"	5.5 lbs. +/- 0.2

## Key Benefits:

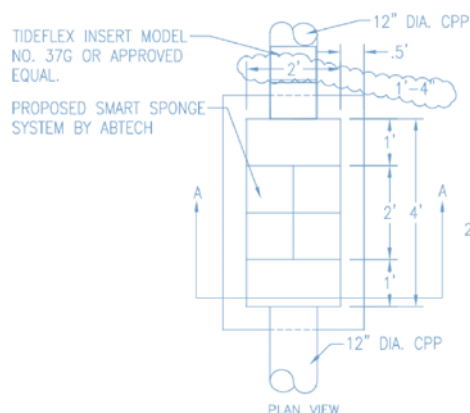
- Flexible solution: retrofit existing installation or applicable to new vault
- Easy and cost effective to maintain
- Lightweight, safe and easy to handle in the chamber sites
- Individually labeled for easy identification



## Multi-Chamber Usage



## Single Chamber Usage



## Disposal Options

As local conditions, product use, and exposure can vary widely, the end user must determine the most appropriate disposal method for a spent Smart Sponge® or Smart Sponge Plus® product. However Smart Sponge® samples saturated with hydrocarbons both in the lab and in the field have been tested according to the EPA's Toxicity Characteristic Leaching Procedure ("TCLP"). These tests show that Smart Sponge® is a "non-leaching" (i.e., non-detect or "N.D.") product. As a result, Smart Sponge® technology can afford many cost effective and environmentally friendly disposal options. The following waste disposal and resource recovery industries have accepted spent Smart Sponge® products for disposal and/or recycling.

**Waste-to-Energy Facilities** - A specialized segment of the solid waste industry has used spent Smart Sponge® as an alternative fuel in the production of electricity. WTE is acknowledged at the federal level as a renewable energy source under the Federal Power Act, Title IV of the Clean Air Act and is a participant in the Department of Energy's National Renewable Energy Program.

**Cement Kilns** - This industry has used the spent Smart Sponge® as an alternative fuel in the production process of Portland Cement. This process is considered a beneficial reuse of waste products. The BTU value of spent Smart Sponge® is consistently above the average acceptable levels set for this high temperature.

**Landfills** - As discussed above, spent Smart Sponge® products have been classified as a solid waste and have been accepted at Subtitle D Landfills.

For more information about the Smart Sponge® technology, visit [www.abtechindustries.com](http://www.abtechindustries.com) or call 1-800-545-8999.

Please keep in mind that, depending upon local conditions, product use, and exposure, a spent Smart Sponge® product could contain one or more of a wide range of contaminants that may impact available disposal options. As a result, generators of spent Smart Sponge products must have their waste analyzed, tested, and classified to determine the appropriate disposal method.

AbTech Industries does not take any responsibility for handling, transport, disposal, or recycling of spent Smart Sponge® products. For a more detailed disposal/recycle overview, please see the "Smart Sponge® Products Disposal Option" documents available upon request from AbTech Industries.

AbTech Smart Sponge® products have been extensively tested both in the laboratory and in the field – with additional testing on-going all the time. Nevertheless, because local conditions, product use, and exposure can vary widely, individual results may differ.

AbTech Smart Sponge® products must be used properly and in accordance with all manufacturer instructions. AbTech Industries does not take responsibility for any product misuse.

**AbTech**  
INDUSTRIES

4110 North Scottsdale Road • Suite 235 • Scottsdale, AZ 85251  
480.874.4000 • 800.545.8999 • [www.abtechindustries.com](http://www.abtechindustries.com)

MAKERS OF  
**smart sponge**  
PRODUCTS